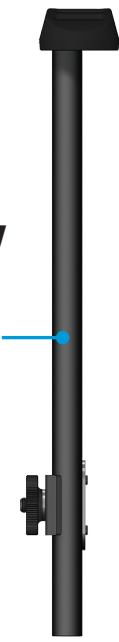


**NEW!**

**Optional accessory**

**ADJUSTABLE SHOULDER PAD**  
For more safety and stability



**ELECTRONICS**

Latest generation RGB LED's, clearer colours with flexible colour options.

- | **Normal machine operation:** 2 blue, 4 green, 2 red
- | **Overload and Pulse:** All LED's flashing full red/green, then full red
- | **Electronic Slip is activated:**  
All LED's flashing red until trigger is deactivated and activated again. Machine stops rotating.
- | **Slow Start and 50% Speed Reduction:** 1 purple
- | **Under-voltage protection:** All LED's full blue. Machine stops.



**2400W**  
More Powerful Motor through Advanced Motor Control

**ERGONOMIC GRIP**



**Optional accessory**  
Extra hand grip

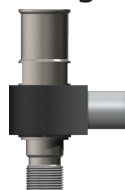
**6,8 KG**  
More Compact and Lower Weight

**LOWER RPM**  
For increased motor life

**SLOW SPEED START**

**AUTO-OFF**  
If Drill Bit is jammed

**Optional accessory**  
Dry Drilling Adapter



**BIT RANGE**

Increased Bit Range for:

- | **Handheld Drilling:** Ø 8 - 70 mm
- | **On Drill Stand:** Ø 8 - 180 mm
- | **Wet Drilling:** Ø 8 - 180 mm

**ROTATABLE**  
Water connector



## For up to 180mm core bits

The new lightweight Karat® 180BG drilling units offer the most efficient solution to just about any drilling job you need to tackle. Use them for Wet or Dry Drilling, Handheld or on Drill Stand. For bit diameters up to Ø180 mm (wet) or Ø202 mm (dry).

- LED Motor Overload Protection System with Latest Generation RGB LED's
- Versatile: use Wet or Dry, Handheld or Rig Mounted
- Even more powerful 2400W motor with PULSE Electronic Motor Protection
- Redesigned Mechanical Safety Clutch manufactured from new special Steel Composition
- Larger Wet Drilling Range up to Ø180 mm
- Soft Start
- New Electronic Safety Clutch
- 360° Rotating Water Connection
- Data Retrieval Option
- Modular Design
- ½" bsp & 1 ¼" unc Combi Spindle
- 3-Speed Gearing for optimal drilling.



See page 248-249 for coring accessories

**NEW!**



- + More Power!
- + Larger Drilling Range!
- + Smarter Electronics!
- + Optional Auto feed attachment (P245)

Part#	DCTDK180
Power:	2400 W
Voltage / Frequency / Gears	230V / 50-60Hz / 3
Bit Range:	Ø 8 - 180 mm
Handheld drilling	Ø 8 - 70 mm (not to be used in 1st gear)
Rig mounted drilling	Ø 8 - 180 mm
Spindle threading:	½" bsp & 1 ¼" unc
Weight:	6.8 kg

